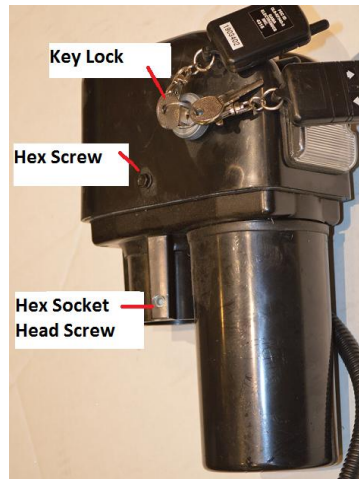


Wireless Remote Control

Operation.

1. Turn the lift key lock to ON position. *(Picture A)*
2. Control the lift by pressing the up / down switch. *(Picture B)*
3. The control will continue working as long as you continue operating the lift.
4. If you stop operating the remote for more than 20 seconds the wireless remote will stop working.
5. To re-activate the wireless remote, Turn the lift key lock to OFF position and then turn it to the ON position.



Picture A

Momentary or Latching Output.

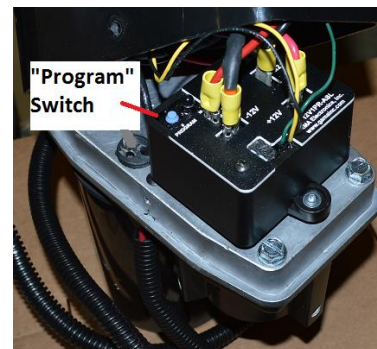
The transmitter and receiver can be configured for momentary or latching operation. For momentary operation, the output of the receiver will be activate for as long as the transmitter switch is depressed, and will turn off when the switch is released. In the latching configuration, the receiver output will turn on as soon as the transmitter switch is depressed and released. To turn off the latching output, the transmitter switch must be depressed and released again. We do not recommend using the latching configuration with the Trilift operation.

Programming Instruction.

1. Remove the power head cover (two hex screws - sides of the cover) *(Picture A)*
2. Locate the pushbutton switch labeled "PROGRAM" *(Picture C)* on the receiver in the power head. Press and hold this switch until the red LED next to the program switch illuminates (approximately 3 seconds). The receiver is now in the transmitter program mode, release the switch. At this point all previously programmed transmitter addresses are erased from the receiver's memory.
3. For Momentary operation press and release a switch on the transmitter. The red program LED on the receiver will blink once. (For latching output, pres and release the same switch a second time, the program LED will flash on and off- not recommend)
4. Repeat previous step for additional transmitters that you desire the receiver to respond to.
5. The receiver will return to normal mode if no transmitter switch are pressed for 5 seconds. The red LED on the receiver will flash and then turn off. The receiver will retain all of its programming even when power is removed.



Picture B



Picture C

For manually operation

- Remove the power head from the lift post by releasing the three hex socket head screws at the bottom of the power head. *(Picture A)*
- Insert the crank to the shaft slot and turn the crank.